

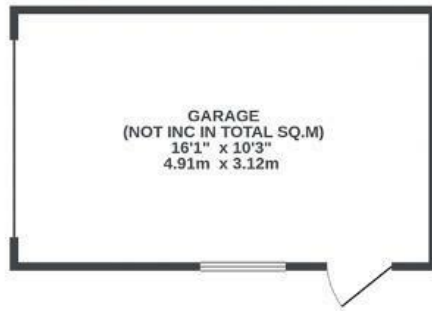
Greenleaze Avenue

BROMLEY HEATH

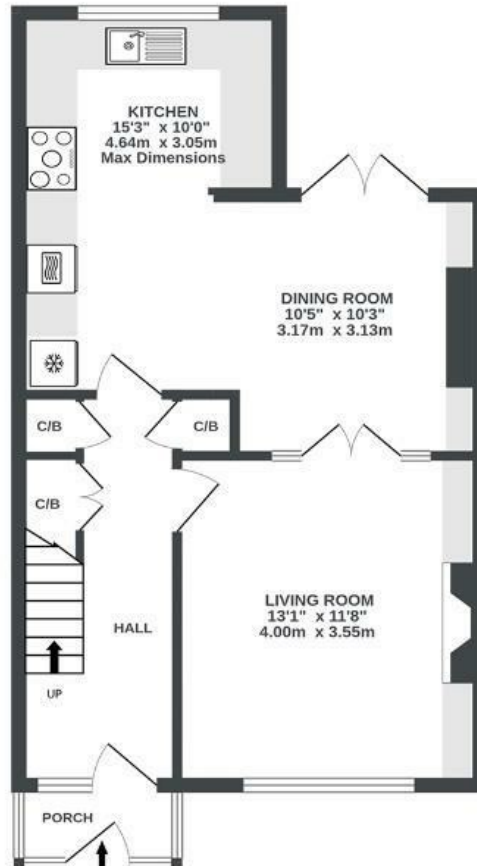
APPROXIMATE FLOOR AREA
84.8 SQM / 913 SQFT



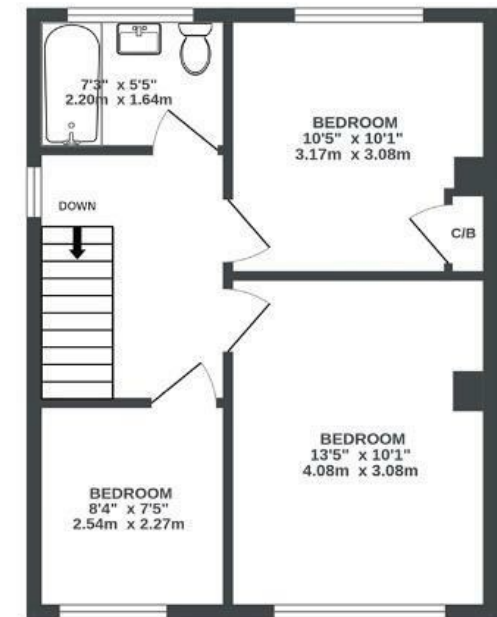
GARAGE
(NOT IN SITU)
0 sq.ft. (0.0 sq.m.) approx.



GROUND FLOOR
499 sq.ft. (46.3 sq.m.) approx.



1ST FLOOR
414 sq.ft. (38.5 sq.m.) approx.



Illustrations are for reference purposes only, measurements are approximate, not to scale.

Boardwalk

Greenleaze

DOWNEND, BRISTOL



£425,000



BS16 6LN



3 Bedrooms



1 Bathrooms

"We've loved living here for the lifestyle it offers. The local walks are a highlight, with easy access to lovely routes like Leap Valley, Mooredend and Frome Valley, making our daily dog walks a pleasure. Having The Sandringham pub round the corner has been very enjoyable as well, especially the quiz nights and beer garden."

